

Live
Life
Large!



You are the Address... You are the Home... You are Happiness...

The **Life**
AT HITEC CITY

Live The Luxury!

Everybody wants to live in a prestigious location like HITEC city. It's where Hyderabad's best residences, global offices and the amenities like shopping, schools, dining and hospitals are connected by wide driveways. When luxurious living is all too common at HITEC City, "The**Life**" is a notch above the luxury. Welcome home.





LIVING AT ITS BEST



Live The Grand!

Welcome to an Exclusive Home..

The Life is a two block, 6-floors magnificent highrises offering a life incomparable in two and three bedroom apartments. Ranging from 1258 Sft to 1720 Sft, these apartments showcase what it takes to elevate the life to consummate living. With unending spaces unfolding The**Life** accommodates every passion of yours.





The majestic homes at The**Life** are lovingly crafted celebrating your spirit of achievement. Here supreme living finds an expression at its best. The feature-rich apartments are artfully designed with striking elevation. With sun-soaked balconies, spacious sit-outs, an ambience of light and breeze pervade throughout the apartment. Chiseled to perfection, an understated sophistication is all pervasive. Premium finishes ensure that the home exude unmistakable grace, creating an aura of charm.

The**Life**
AT HITEC CITY



GET A LIFE!



Live
The
Spaces!

You are the Space...

The exclusive two and three-bedroom apartments are lavish with state-of-the-art amenities, characterized by refined elegance, exceptional style and sophistication rarely seen elsewhere. TheLife strikes a fine balance between indoors and outdoors, design and quality, style and space.





Live
The
Joy!

Indulge in Life & Lifestyle...

TheLife delivers value through intelligent designs, an uncompromising quality in material and gadgets and a refinement that matches your expectations. Outdoor greenery matches indoors to create a magical place called your home. Elevate your lifestyle with plenty of indoor and outdoor spaces, recreation facilities that appeal to one and all in family.



Project Highlights

- A Gated Community project
- Six floor building, 2 Blocks
- 2 & 3 BHK apartments
- 1258 Sft -1720 Sft areas
- Vaastu compliant
- No common walls
- Exclusive clubhouse
- Elegant landscaping
- Tot lots
- Spacious sit-outs, balconies
- Entrance Lobby
- Two-level parking
- 24-hr Security with Video door phone & CC cameras



Live
The
Thrill!

Recreation

- Swimming Pool
- Fully furnished Gym
- Multi purpose hall
- Jogging track
- Landscaped garden
- Children play area



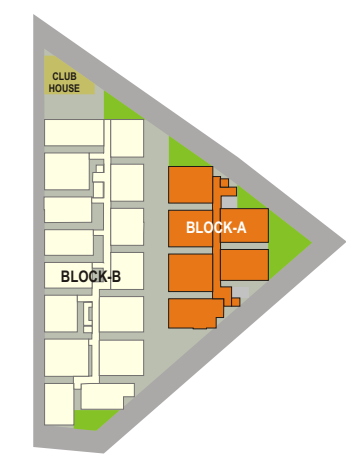
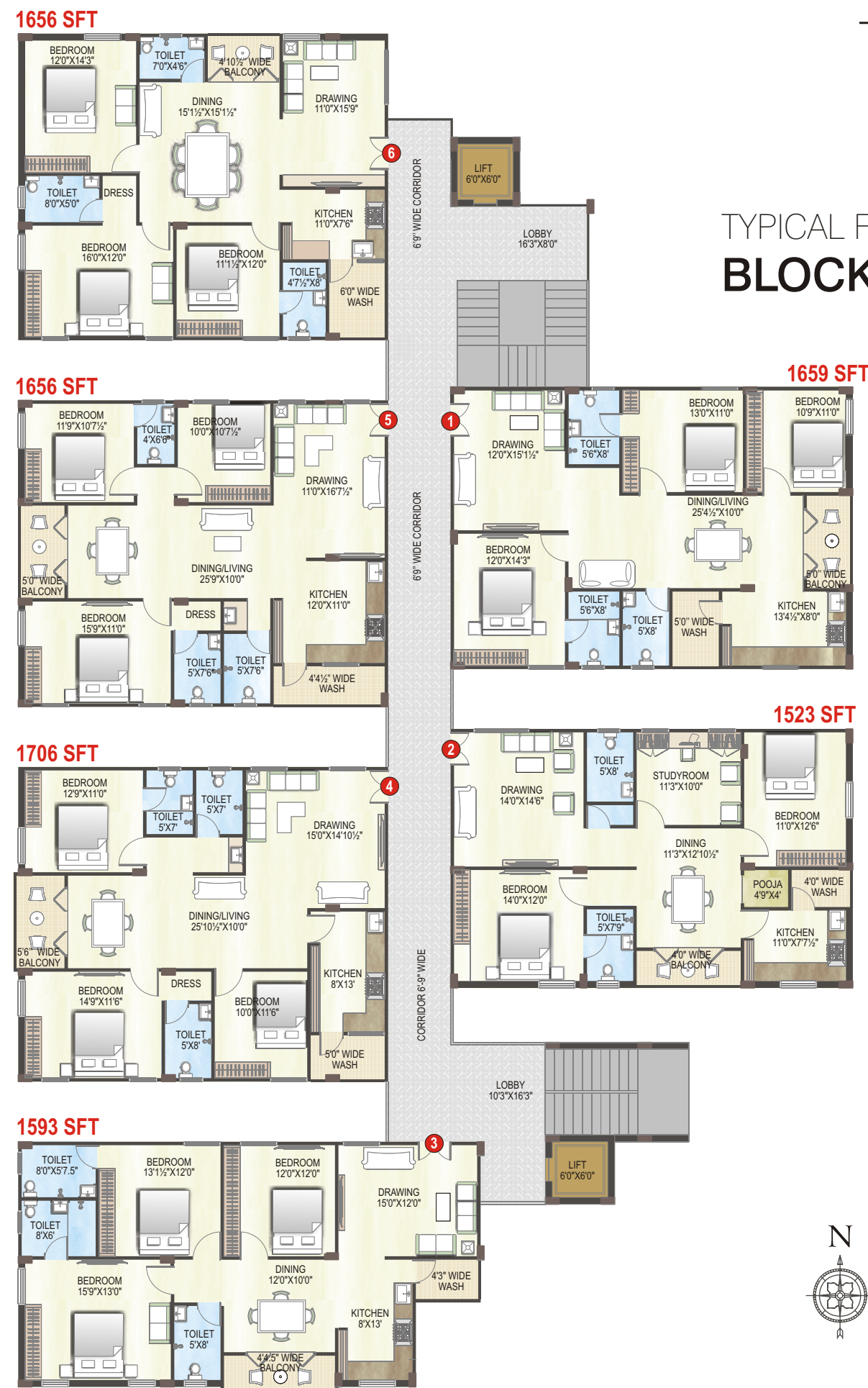
Experience the Life Every Moment...

The clubhouse at The**Life** hosts active life and its several recreation options will engage one and all in the family. Jog within premises everyday and work out weights in a well equipped gym. Swim a few laps in the pool with children. Attend parties held frequently in multi purpose hall. The social life is vibrant as you play with your neighbors and attend the clubhouse regularly.

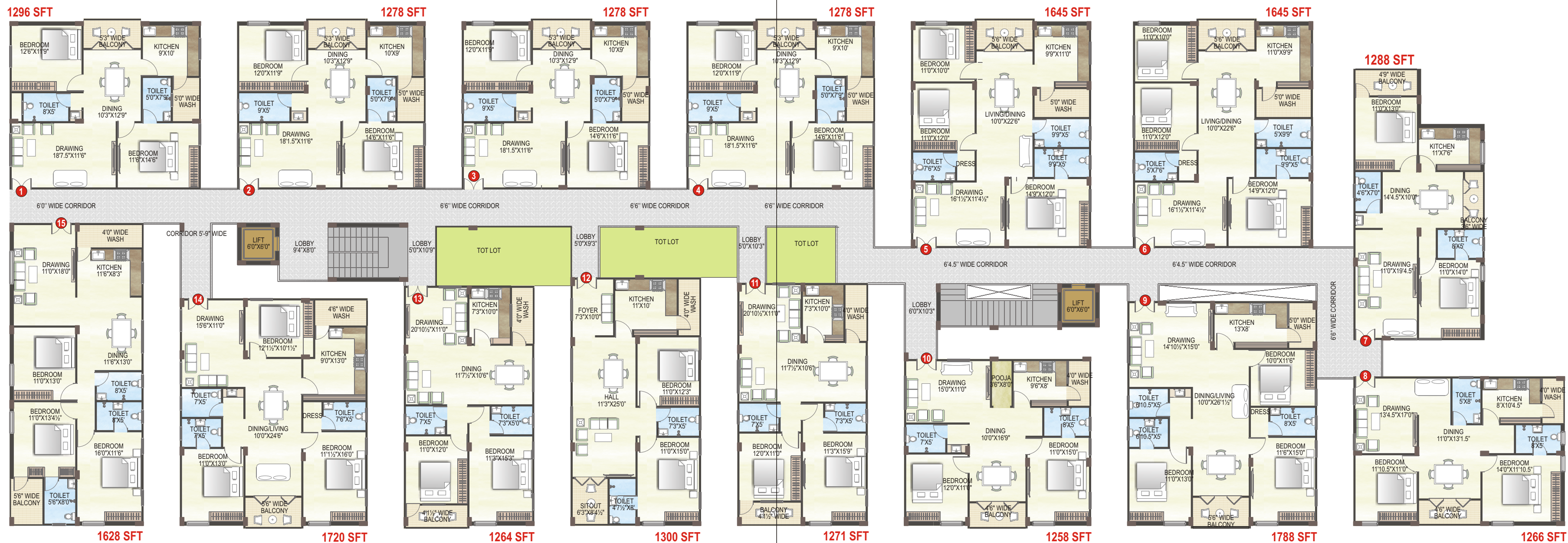
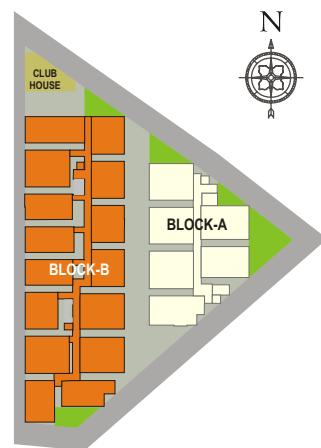




TYPICAL FLOOR PLAN
BLOCK A



TYPICAL FLOOR PLAN
BLOCK B



Specifications

Foundation & Structure

RCC framed structure
Ready mix concrete for slabs

Super Structure

Outer wall are of 9" (exposed to sky) & inner walls are of 4 ½ thick lightweight fly ash brick, with cement mortar (1:6 prop) / if light weight cement blocks are used then outer walls shall be 6" thick and all internal walls shall be 4" thick

Cupboards

One loft of 2' width shall be provided in each bedroom subject to availability of space

Doors & Shutters

Main door, Main door shutter and all the internal door frames shall be of seasoned Teak wood. All internal door shutters shall be made of designer flush doors.

Windows

UPVC windows shall be of NCL/Alfa/Imported/ or equivalent
Window grills of Iron decorative

Hardware

Locks shall be of Godrej/Dorset/Europa or equivalent makes for main doors & SS fittings.

Kitchen

Platform will be provided with granite along with wall cladding up to 2' ft above platform with Varmora/Johnson/Imported tiles and upto 3' ft height in the utility area
Provision for exhaust fan – Provision for RO system, Provision for Hob & Chimney
Loft shall be provided as per availability of space
One sink in the kitchen shall be provided and preferably shall be of Nirali / Imported / or equivalent

Toilets

All the toilets shall be of non- slippery ceramic tile flooring with Varmora/Johnson/Imported tiles.
Wall cladding with ceramic tiles up to 7' height. Varmora/Johnson/Imported tiles

All CP Fittings of marc / jaguar / Grohe / equivalent .

All sanitary fittings of Hindware/Cera/Roca / imported Make.

Water proofing with proper sealants

Provision for geysers in all toilets

Pedestal wash basin in all toilets

PP-R/CPVC pipes to be used. Ashirwad / astral / imported Make

Flooring

Flooring shall be done with Vitrified tiles of Varmora/Johnson / imported or equivalent - make & preferably in the size of 605*605 or 800*800.

Staircase & corridors

Aesthetically designed Marble or Granite or combination of both.

Lift wall cladding

Aesthetically designed granite cladding or any natural stone as per design provided by the architect

Painting

All the Internal walls shall be of smooth finish (lappam Birla White Putty)

Plastic emulsion paint of Asian make shall be used for painting the walls

External walls are with 2 coats of cement plaster in textured finish as per design

Outside with 2 coats of weather coat paint

(Asian)

Main door shall be neatly melamine polished.

Electrical & Communication

Concealed Copper wiring of Finolex /Ploy cab/ Havell's. Modular Switches of Legrand, North-west, Gold Medal or Havell's.

Geyser power points in all bath rooms

Three phase supply with all circuits breakers (MCBS) – Legrand make

T.V. Point (1 Bedroom& hall) -

A.C. Points in all bed rooms.

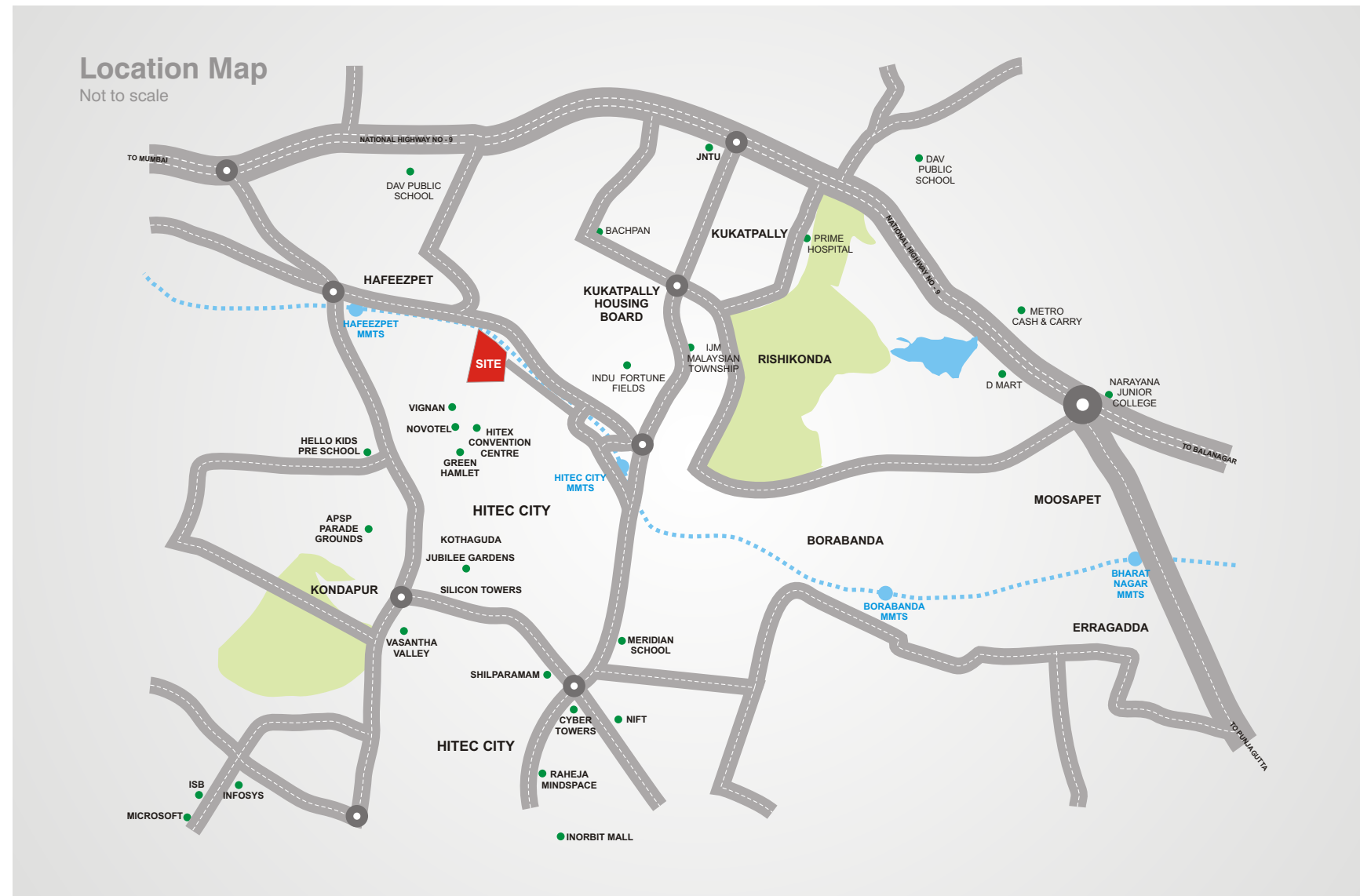
Telephone points in master bedroom and sitting / dining area 4Pair TP cable – 2 points.

Internet/Broadband – 1 Point.

Adequate power points in the kitchen



Live The Limelight !



Distance from Site:

- HITEC City MMTS Station - 1 Km
- Forum Mall - 1 Km
- JNTU, Kukatpally - 2 Kms
- Meridian School - 2 Kms
- HITEC City - 2.5 Kms
- Image Hospitals - 4 Kms
- Financial District - 6 Kms

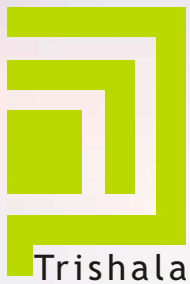
Connect the World...

The Life, appreciated!

To be in the right place and at the right time, is an art in itself. Madhapur has put Hyderabad on global map by dint of IT companies, HITEC City, HICC and highways. The most prestigious location of Hyderabad is also home to the best and the brightest of citizens. The Life is located on the periphery of Vasantha City and next to Novotel Hotel near Madhapur-JNTU road. The wide driveways take you to swanky shopping malls, fine dining restaurants, reputed schools and global companies in a few minutes drive. It pays to spend your life in a happening location!



PROMOTERS



Trishala Infrastructure Pvt. Ltd.

(a subsidiary of Namishree Infrastructure & Projects Pvt. Ltd.)

The grand, 3rd Floor, 6-3-1090/B/4
Near Hotel park, Raj Bhavan Road
Somajiguda, Hyderabad.

Phone: +91-40- 6553 7217
Email:trishalainfra7@gmail.com
www.trishalainfra.com

ARCHITECTS & STRUCTURAL CONSULTANTS

S'N'S ASSOCIATES

Vidya Nagar 8 St, Vidya Nagar, Adikmet, Hyderabad, Telangana 500044

LANDSCAPE ARCHITECTS

JAGADEESH

Note : This brochure is purely a conceptual presentation and not a legal offering.
The promoters reserve the right to make changes in elevation, specifications and plans as deemed fit.